

Riderless Heald Wire

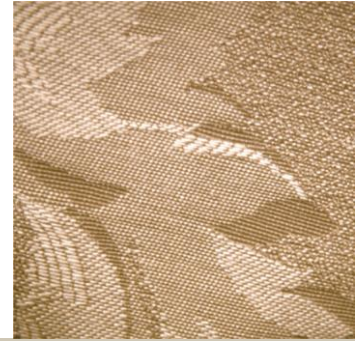


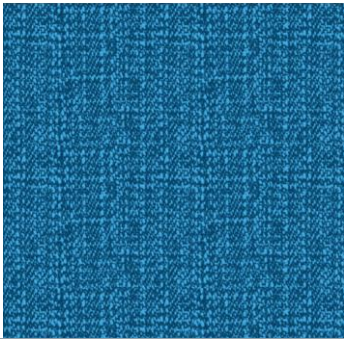
Table for Selection of Suitable heald

Suitable for warp counts									Maximum density	Flat steel healds with laterally open, J-or-C-shaped end loops
Tex system	Metric number	Denier	English count		Strip angle		Eye angle		Strip size cross section	Eyelet size
			cotton	Worsted	Simplex	Duplex	Simplex	Duplex		
Tt	Nm	Td	NeB	Nek	Per Cm	Per Cm	Per Cm	Per Cm	MM	MM
30	34	300	20	30	12	18	15	23	5.5 x 0.30	5.5 x 1.2 - J
72	14	650	8	12	8	12	10	15	5.5 x 0.30	6.5 x 1.8 - J
					7		9		5.5 x 0.40	
						12		15	6/7.2 x 0.30	
250	4		2		6		8		5.5 x 0.30	6.5 x 2.5 - J
					6		8		5.5 x 0.40	
250	4		2	4	4		7		5.5 x 0.30	8.0 x 2.5 - J
					4		6		5.5 x 0.40	
					10				5.5 x 0.30	7.8 x 3.8 - J
					8				5.5 x 0.40	
30	34	300	20	30	12	18	15	23	5.5 x 0.30	5.5 x 1.2 - C
								17		
72	14	650	8	12	8	12	10	15	5.5 x 0.30	6.5 x 1.8 - C
					7		9		5.5 x 0.38	
250	4		2		6		8		5.5 x 0.30	6.5 x 2.5 - C
					6		8		5.5 x 0.38	
250	4		2	4	4		7		5.5 x 0.30	8.0 x 2.5 - C
					4		6		5.5 x 0.38	
					10				5.5 x 0.30	7.8 x 3.8 - C
					8				5.5 x 0.38	

Guidelines for densities have been developed through our extensive application experience. However, they can be influenced by warp yarn types, required densities, or pattern parameters. Heald wire densities depends on the warp yarn used.

Above are the standard size. We are specialist in supply of thin or thick heald to get optimum result. You are requested to contact for technical details.

Riderless Heald Wire



- Riderless healds are manufactured with most care at all stages of production to run smoothly on loom. Eyelet is very smooth and highly deburred to run any fine count of fabrics. Bigger eyelet is also offered for heavy fabrics and technical textile uses.
- The fine polished eyelet and round side edge of Heald Wire increase result of fabric lustre and overall finish after process of fabric and design.
- Wide range of eyelet size and position to give optimum result in every specific application.
- Minimum delivery time for any special requirement.
- International standard of dimension and accuracy increase production on looms.

Eyelet Sizes

5.5X1.2	6.5X1.8	6.5X2.5
7.8X3.8	8X3.8	8X2.5

Specification For Heald Wires	
Length	220 MM To 382 MM
Width	5.5 MM / 6 MM / 6.64 MM / 7.2 MM
Thickness	0.2 MM To 1 MM
Type	C, J, O, Simplex, Duplex
Eyelet Size	5.5x1.2, 6.5x1.8, 6.5x2.5, 7.8x3.8, 8x3.8, 8x2.5.
Eyelet Position	In centre, 5 MM above centre
Moc	Stainless Steel, High Carbon Spring Steel Strip
Plating	Nickel, Zinc

